

Official Event Info

WUOC Tour day 1 - Long

Tuesday 20 July 2010

Gyllbergen



Public event during the WUOC.

Classes and lengths

Class	Length	Scale	Class	Length	Scale
H14	3,6	1:10 000	D14	2,9	1:10 000
H16	4,8	1:15 000	D16	3,8	1:15 000
H18	6,5	1:15 000	D18	Cancelled	
H20	6,9	1:15 000	D20	Cancelled	
H21	8,0	1:15 000	D21	5,3	1:15 000
H40	6,7	1:10 000	D40	4,4	1:10 000
H50	5,6	1:10 000	D50	3,9	1:10 000
H60	4,8	1:10 000	D60	3,0	1:10 000
H70	3,8	1:10 000	D70	2,8	1:10 000
Öppen 4	2,9	1:10 000			
Öppen 5	3,8	1:10 000			
Öppen 6	5,2	1:10 000			
Öppen 7	3,0	1:10 000			
Öppen 8	5,3	1:10 000			
Öppen 9	6,9	1:15 000			
Öppen 10	11,6	1:15 000	Uses parts of the WUOC courses		

H is men's class and D women's.

Women 18 and 20 is cancelled.

"Öppen" means you can enter on the day.

Race location

Signposted from highway 50 at the Idkerberget junction 7km southwest of Borlänge near the village of Floda. Thereafter 10 km to the parking.

We encourage you to carpool as much as possible since the parking space is limited!

Parking

The distance from parking to competition center is 0-1000 meters.

Parking fee 20 SEK/ 2 Euro

We encourage you to carpool as much as possible since the parking space is limited!

You will not be allowed to park caravans at the competition center or along the last 5 kilometers of the road to the competition center, neither before or during the competition.

WUOC tour bus

WUOC Tour bus leaves Tuesday and Thursday at 12.30 from parking area close to "Maximgrillen" just outside Hotel Scandic in Borlänge. 9 persons have pre-ordered.

Payment

For competitors who are not representing Swedish clubs the startfee has to be payed before start.

Persons entered between 10th and 16th July should pay by cash in SEK or Euros at competition centre before the start.

Entry on the day

Open courses will be sold on the competition day between 14.00 and 15.30. Start times are between 15.30 and 16.30. Payment in cash (Euro or SEK) is expected from competitors who are not representing clubs associated with the Swedish Orienteering Federation.

Fees: 50 SEK/5 Euro (competitors born 1994 or later), 90 SEK/9Euro (competitors born 1993 or earlier)

Punching system

Sportident. Rental fee 30 SEK/3 Euro, competitors who are not returning their rental cards will be charged 500 SEK/50 Euro. Rental cards will be handed out in the "Entry on the day"-tent (Direktanmälan).

SI-cards are emptied on the way to the start and checked upon entering the start chute.

Check light and sound signals to make sure that your punch has registered correctly. If no signal is given, use the the backup punch to mark the map in the specified box. SI-cards version 9 can not be used.

Start

First start is at 15:30. Late entries will be placed in the regular start draw.

Arrive early! It will surely be exciting to watch the final stage of the WUOC, **and there is also a slight chance that there will be delays in the traffic on the way to the competition center between 15.00 and 17.00 because buses have to be given right of way.**

Startlist will be published at www.wuoc2010.se and the competition center.

Competitors in open classes can choose their own starttime between 15.30 and 16.30 ("by start punching"). Late starts are allowed until 30 minutes after the scheduled start.

According to Swedish competition rules legs and upper body must be completely covered

by clothes. Shirts with short arms are allowed. A check will be performed at the start and if your clothing is deemed insufficient you will not be allowed to start.

Distance Competition Center – Start: 1500 meters along a forest road. Marked with orange and white ribbons.

Map

Digitally printed in scale 1:10 000 or 1:15 000, contour interval 5 meters.
Revised and extended 2009-2010 by Erik Sundberg.

Terrain description

Hilly terrain with a height difference of 20-60 meters. Small contour details in some areas. The vegetation is mixed pine and fir forest. Blueberry bushes and heather up to a height of 0.4 meters in parts of the forest. Almost no felled or green areas. The ground is mostly soft due to moss and other ground vegetation in the forest. Some areas with bare rock. Marshes can be very soft in wet conditions. Visibility varies from good to very good. Almost no roads or paths

Local map symbols

Small hunting huts are not shown on the map.
Black O, charcoal burning ground
Black X, ruin of a small hut

Refreshments

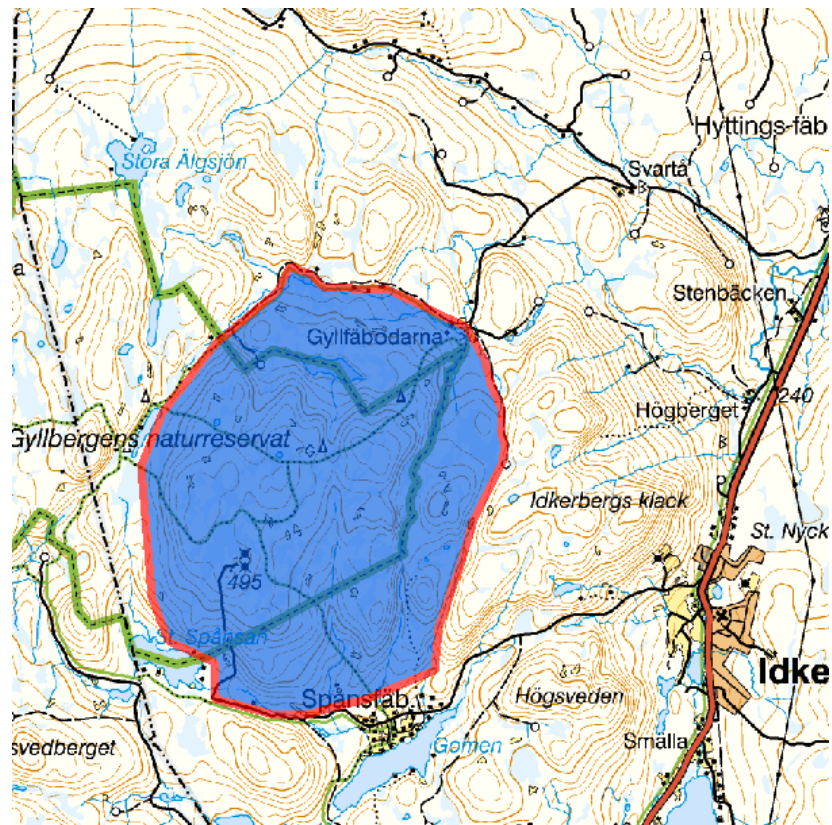
Water is served at the finish. There are no water stops in the forest.
Runners on the "Öppen 10"-course are recommended to carry their own water.

Showers/toilets

There are no showers at the competition center.
Toilets will be available at the competition center and the start.

Embargoed area

Please note that special rules apply for WUOC participants and persons associated to these participants. More information can be found here:
www.wuoc2010.se/Home/EmbargoedAreas .



Food

Hamburgers, hot dogs, sandwiches, muffins and other assorted goodies will be sold at the competition center.

Orienteering gear shop

SM sport www.smsport.nu will sell orienteering gear at the competition center.

Crèche

Will be available at the competition center from 14.30 for children older than 2 years. Fee 20 SEK/ 2 Euro.

Prize

A prize will be randomly distributed to one lucky class winner.

Results

Will be displayed at the competition center and on www.wuoc2010.se and www.sttunaik.nu

Wild animals

Competitors who make observations of big mammals such as moose, deer or bear should report to the information desk.

Maximum competition time

2,5 hours.

Rules

SOFT (Swedish Orienteering Federation) rules apply to the WUOC-tour races.

Organisation

Competition Leader Johan Alfredsson

Information and assistant Competition Leader Sture Sjödin sture.sjodin@telia.com

070-366 42 71

Information desk. Mats Wallin mats.h.wallin@gmail.com 070-578 99 37

Course Planner Thomas Norgren

Course Controller Mattias Mårts

Competition Controller: Robert Östlund, Säterbygdens OK

More information www.wuoc2010.se

We warmly welcome you and wish you good luck!

Stora Tuna OK

