



OK Renen, Bergnäsets AIK and Gammelstads IF
invites to



races 5, 6 and 7 in Luleå 23-25 May 2014

5 - Sprint 23 May (WRE)

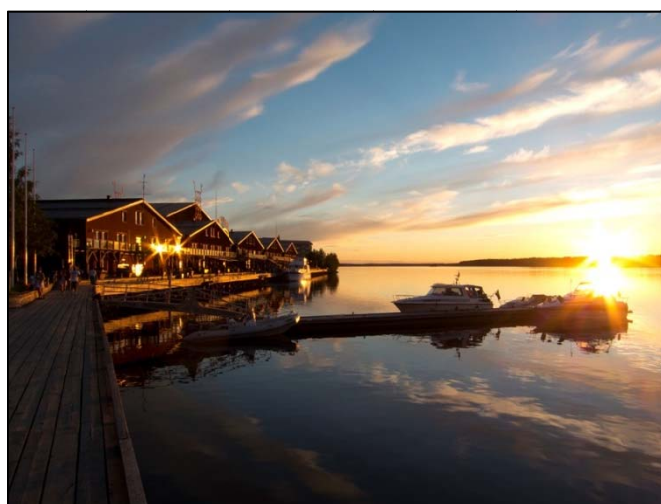
6 - Middle 24 May (WRE)

7 - Long 25 May (final with chasing start)

- with Luletrippeln 2014



Bälingeberget



Luleå Norra hamn (Photo: Fredrik Broman)





ENTRIES

Entries (including late entries) are made via the Eventor internet service.

The closing date for entry is **Friday 16 May** for all three races.

Entry fees for competitors running for Swedish clubs will be invoiced after the events.

Fees for all other competitors should be paid to OK Renen before the entry closing date using the bank details below. All bank fees should be paid by the competitor.

Bankgiro: 6 36 55-5

BIC: NDEASESS

IBAN: SE34 9500 0099 6034 0063 6555

By submitting an entry competitors agree to the publication of start and result lists on the internet.

Day 1 (Sprint)

Late entries will be accepted, for an additional 50% fee, up until Wednesday 21st May at the latest. Start times for late entries will be allocated in the same draw as for all other entries received.

Entry to Open classes can also be made on the day at the event.

Entry fee - Elite classes: 240 SEK, Juniors (up to 16 years old): 65 SEK. All other age classes: 110 SEK.

Day 2 (Middle)

Late entries will be accepted, for an additional 50% fee, up until Wednesday 21st May at the latest. Start times for late entries will be allocated in the same draw as for all other entries received.

Entries for Introductory (inskolning), Development (utveckling) and Open classes can also be made on the day at the event.

Entry fee - Elite classes: 240 SEK, Juniors (up to 16 years old): 65 SEK. All other age classes: 165 SEK.

Day 3 (Long)

Late entries will be accepted, for an additional 50% fee, up until Wednesday 21st May at the latest. Late entries for the Silva League will be incorporated into the chasing start. Start times for all other late entries will be allocated in the same draw as for the other entries received.

Entries for Introductory (inskolning), Development (utveckling) and Open classes can also be made on the day at the event.

Entry fee - Elite classes: 240 SEK, Juniors (up to 16 years old): 65 SEK. All other age classes: 165 SEK.

SELECTION FOR SILVA LEAGUE CLASSES

This will be made according to SOFT's selection policies for the Silva League (updated for the 2014 season), see www.orientering.se. Those not selected for the main Silva Leagues classes will automatically be placed in the E2 classes. Should more than one E2 class be required, runners will be allocated to classes so that as even a start-field as possible is assured.

WORLD RANKING EVENT (WRE)

Day 1 and 2 (SL stage 5 and 6), i.e. sprint and middle, have WRE status for classes H21E and D21E.

All competitors in H21E and D21E should provide their current "IOF Ranking ID" in their entry.

The WRE races comply with the IOF "Guidelines for World Ranking Events, 2012 Edition" for H21E and D21E, where applicable. This invitation is published as Bulletin 1.

PUNCHING SYSTEM

Sportident.

Please provide your SI card number when entering. If no card number is given a hire card will be allocated at a cost of 20 SEK /day. A charge of 300 SEK will be made for the loss or non-return of hire cards.

START / RESULT LISTS / EVENT INFO

See www.luletrippeln.nu or Eventor.





SILVA LEAGUE 5: 23 MAY – SPRINT

SILVA LEAGUE - SPECIFIC INFORMATION

EXTENDED RESTRICTED AREA

From 2pm on the day of competition it is completely forbidden for competitors in all Silva League classes to visit the parts of Luleå designated as a restricted area. This means that competitors travelling, for example, from the airport to Luleå town centre after 2 pm must take a route via the E4.

QUARANTINE

All competitors in the Silva League shall, by 4 pm at the latest, check in at the quarantine. (Note – in the initial event information this time was mistakenly given as 3.30 pm).

The quarantine is indoors and heated with access to toilets and a simpler food and drinks servery.

STARTS/PRE-START

First start at 4 pm. First pre-start at 3.50 pm. Pre-start is immediately adjacent to the quarantine.

CLASSES AND COURSE LENGTHS

Preliminary course lengths for Elite classes:

H21E (WRE)	3.3 km	D21E (WRE)	2.9 km
H20E	3.1 km	D20E	2.7 km
H18E	3.1 km	D18E	2.7 km

Official course lengths will be given in the event final details and the start list.

CHALLENGE THE ELITE - SPECIFIC INFORMATION

CLASSES

Please note that no competition classes other than the Silva League classes will be offered on the Friday. However, all E1 courses will be offered as Open classes with first start times after the final competitors in the elite classes have finished.

ENTRIES

Via Eventor or at the event arena up until 7 pm.

STARTS

From 7 pm to 7.30 pm.

DIRECTIONS AND SIGNPOSTING

Signposted from road 97 at Svartöleden. From here vehicles intending to park at the quarantine area, as well as vehicles dropping off runners at the quarantine area, will be separated from those going straight to the event arena.

If approaching from the E4, turn off at the junction with road 97 and follow signs towards Luleå. You will pass two roundabouts after which signposting for the event will begin.

If approaching from Luleå town centre, take road 97 west towards Boden. After crossing over a causeway (with water on both sides) signposting for the event will begin.

For competitors planning to walk / jog from central Luleå to the quarantine area and the arena, a route description will be published at the same time as the event final details. Depending on where you are starting from the distance will be 0.5 – 2 km.

PARKING

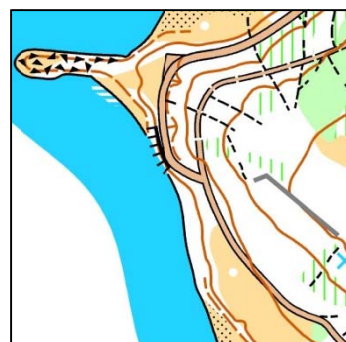
Distance from parking to the arena is 0 – 1000 m. Alternatively, adjacent to the quarantine. In both cases the space available is very limited. We therefore recommend that you travel to and from the event on foot, by public transport (bus) or that you share cars.

BUSSES

Anyone bringing a bus to the event should inform the organisers when submitting their entries. Specific instructions will then be issued as regards parking arrangements.

TERRAIN DESCRIPTION

Mainly a built-up urban area with small pockets of parkland and woodland. The area has good runnability and is relatively flat.



MAP

Surveyed 2013 by Robert Micek, Daniel Lebar and Sdenek Sokolar. Scale 1:4000. Contour interval 2 m. Laser printed.





PRIZES

Prizes will be awarded to the best placed competitors in the elite classes.

LIVE COVERAGE AND GPS-TRACKING

Live speaker coverage, results and GPS-tracking will be available.

RESTRICTED AREA

Maps showing the restricted area are published on the Eventor website.

OLDER MAPS

Older maps of the competition area will be published on the event website during the spring.

SPORTS EQUIPMENT TRADERS

No sports equipment sold during the Friday's race.

FOOD AND DRINK

The customary servery with hamburgers and pancakes.

FIRST AID

Available at the event arena.

SHOWERS AND TOILETS

Indoors, adjacent to the event arena.

CHILDREN'S ACTIVITIES

Not available.

TRAVEL AND ACCOMMODATION

See "Info 1" on www.luletrippeln.nu and Eventor.

PRINCIPAL EVENT OFFICIALS

Event organiser: Anders Bennitz, +46 70 2207870

Competition organiser: Anders Bennitz
Planner: Per Ögren

OF's competition controller: Frans Wickbom
OF's course controller: Kjell Sandström
OF's mapping controller: Kjell Mörtberg
SOFT's organiser's coach: Per Forsberg

Speaker: Per Forsberg

Press contact: Inger Wennberg, +46 730 970450

IOF Event Adviser: Bo Klamfelt





SILVA LEAGUE 6: 24 MAY – MIDDLE DISTANCE

SILVA LEAGUE - SPECIFIC INFORMATION

QUARANTINE

All competitors in the Silva League E1 classes must have passed through or be in the quarantine area by 1 pm at the latest.

Part of the quarantine area will be indoors and heated with access to toilets and a simpler food and drinks servery.

Distance from arena to quarantine approximately 500 m.

START

First start 10.40 am. Distance from quarantine to start is approximately 1300 m, arena to start approximately 300 m.

CLASSES AND COURSE LENGTHS

Preliminary course lengths for Elite classes:

H21E (WRE)	5.7 km	D21E (WRE)	4.7 km
H20E	5.0 km	D20E	3.9 km
H18E	4.9 km	D18E	3.8 km

Official course lengths will be given in the event final details and the start list.

OTHER CLASSES

START

First start 11 am. Distance arena to start approximately 300 m.

CLASSES

Competition age classes with interval starts: HD10 – HD85.

Classes with free start time: U1-2, Inskolning, ÖM 1,3,5,7,8.

Course lengths as per SOFT's recommendations 2013.

The organisers retain the right to combine classes if too few entries are received.

ARENA

Close to the village of Bälinge.

DIRECTIONS AND SIGNPOSTING

Signposting from the E4 at the first exit south of the Lule river (Luleälv). From here drive 10km NW along the south bank of the river towards Boden.

If approaching from central Luleå, cross the bridge to Bergnäset (towards the airport) and then follow the event signposting.

PARKING

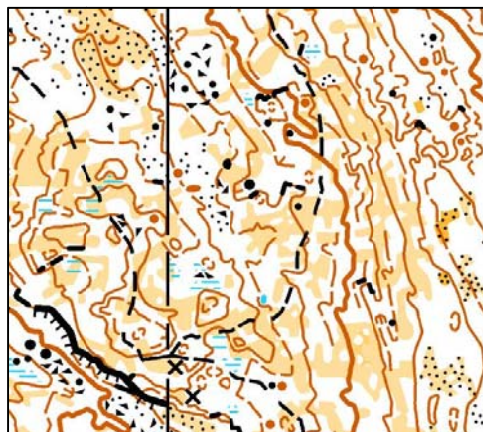
Parking is adjacent to the arena. However, if the ground is waterlogged the distance may be up to 2 km. A charge of 20 SEK per car and 100 SEK per bus will apply.

BUSSES

Anyone bringing a bus to the event should inform the organisers when submitting their entries. Specific instructions will then be issued as regards parking arrangements.

TERRAIN DESCRIPTION

Terrain: Forest with only a couple of forest tracks and a number of glacial boulder fields of variable size. Mainly detailed terrain but with some regions with very limited detail. The terrain lacks line and major, dominating features to aid navigation.



Hills: Relatively small variations in altitude with detailed hillside slopes.





Runnability: Fast runnable areas of open rock combined with areas of denser woodland and rocky ground with restricted runnability. The vegetation is mainly fully grown evergreen woodland with some pine and birch.

A completely separate competition area is used for the shorter junior courses. The terrain here is very flat with clear features to aid navigation.

MAP

Surveyed 2013 by Robert Micek, Daniel Lebar and Sdenek Sokolar. Scale 1:7500 for HD60-. Scale 1:10000 for all other classes. Contour interval 5 m. Laser printed.

RESTRICTED AREA

Maps showing the restricted area are published on the Eventor website.

OLDER MAPS

Older maps of the competition area will be published on the event website during the spring.

PRIZES

Prizes to the best placed runners in the elite classes.

Prizes to winners in other classes.

LIVE COVERAGE AND GPS-TRACKING

Live speaker coverage, results and GPS-tracking will be available.

"MINIKNAT" STRING COURSE AND CHILDMINDING

Miniknat from 10 am to 11 am. Fee 20 SEK. Child-minding adjacent to the arena from 10 am. Fee 20 SEK/child. Please advise the number of children requiring this service, along with their ages, via Eventor (Please note that any child using this service should be able to go without a nappy)

SPORTS EQUIPMENT TRADERS

Keltamäki, www.keltamaki.com, will be at the arena, selling orienteering and roller ski equipment. Only cash payment.

FOOD AND DRINK

The customary servery with hamburgers and pancakes.

SHOWERS AND TOILETS

Outdoors, adjacent to the arena. A limited number of toilets will also be available at the quarantine area and the elite start.

FIRST AID

Available at the event arena.

TRAVEL AND ACCOMMODATION

See "Info 1" on www.luletrippeln.nu and Eventor.

PRINCIPAL EVENT OFFICIALS

Event organiser: Anders Bennitz, +46 70 2207870

Competition organiser: Eva Leffler, +46 70 2501883
Planner: Melker Pettersson

OF's competition controller: Frans Wickbom
OF's course controller: Kjell Sandström
OF's mapping controller: Kjell Mörtberg
SOFT's organiser's coach: Bo Klamfelt

Speaker: Per Forsberg

Press contact: Inger Wennberg, +46 730 970450

IOF Event Adviser: Bo Klamfelt





SILVA LEAGUE 7: 25 MAY – LONG DISTANCE

SILVA LEAGUE - SPECIFIC INFORMATION

QUARANTINE

All competitors in the Silva League E1 classes shall, prior to their admission to the start, report to the quarantine area. The quarantine opens at 9 am. Last admission to the quarantine is 20 minutes before the first start in the respective class.

Toilets and a warm-up area will be available at the quarantine which is adjacent to the start.

START

Chasing start based on overall results in the Silva League (max. 20 minutes for each class). All runners outwit the chasing start will join a mass-start. There will be no E2 or E3 classes. First starts at 10 am. Distance from the quarantine to the start is approximately 2000 m.

CLASSES AND COURSE LENGTHS

Preliminary course lengths:

H21E	12.5 km	D21E	10.0 km
H20E	10.0 km	D20E	7.0 km
H18E	7.2 km	D18E	6.2 km

Official course lengths will be given in the event final details and the start list.

OTHER CLASSES

START

First start 10 am. Distance arena to start approximately 500 m.

CLASSES AND COURSE LENGTHS

Competition age classes with interval starts: HD10 – HD85.

Classes with free start time: U1-2, Inskolning, ÖM 1-9.

Course lengths as per SOFT's recommendations 2013.

The organisers retain the right to combine classes if too few entries are received.

ARENA

Close to the village of Bälinge.

DIRECTIONS AND SIGNPOSTING

Signposting from the E4 at the first exit south of the Lule river (Luleälv). From here drive 10km NW along the south bank of the river towards Boden.

If approaching from central Luleå, cross the bridge to Bergnäset (towards the airport) and then follow the event signposting.

PARKING

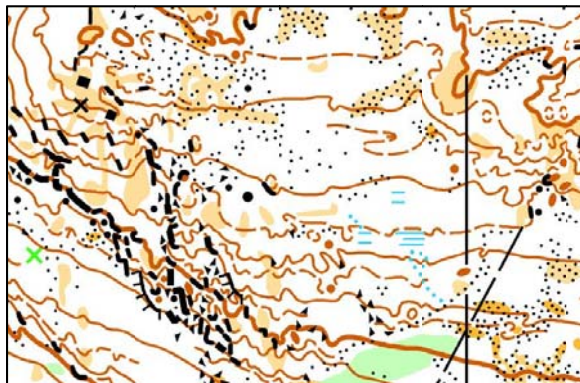
Parking is adjacent to the arena. However, if the ground is waterlogged the distance may be up to 2 km. A charge of 20 SEK per car and 100 SEK per bus will apply.

BUSSES

Anyone bringing a bus to the event should inform the organisers when submitting their entries. Specific instructions will then be issued as regards parking arrangements.

TERRAIN DESCRIPTION

Terrain: Forest with only a few forest tracks and a number of glacial boulder fields of variable size. Mainly detailed terrain but with some regions of very limited detail. The terrain lacks line features and any major, dominating features to aid navigation.



Hills: Reasonable variation in altitude with relatively steep slopes in places. Principally one large hill with varying feature detail.





Runnability: Fast runnable areas of open rock combined with areas of denser woodland and rocky ground with restricted runnability. The vegetation is mainly fully grown evergreen woodland with some pine and birch.

A completely separate competition area is used for the shorter junior courses. The terrain here is very flat with clear features to aid navigation.

MAP

Surveyed 2013 by Robert Micek, Daniel Lebar och Sdenek Sokolar. Laser printed at scale 1:7500 for HD60-. Offset printed at scale 1:15000 for classes HD16 – HD35. Laser printed at scale 1:10000 for all other classes. Contour interval 5 m.

RESTRICTED AREA

Maps showing the restricted area are published on the Eventor website.

OLDER MAPS

Older maps of the competition area will be published on the event website during the spring.

PRIZES

Cash prizes for the final overall results in the Silva League.

Prizes to winners in other classes.

LIVE COVERAGE AND GPS-TRACKING

Live speaker coverage, results and GPS-tracking will be available.

"MINIKNAT" STRING COURSE AND CHILDMINDING

Miniknat from 9 am to 10 am. Fee 20 SEK. Child-minding adjacent to the arena from 9 am. Fee 20 SEK/child. Please advise the number of children requiring this service, along with their ages, via Eventor (Please note that any child using this service should be able to go without a nappy).

SPORTS EQUIPMENT TRADERS

Keltamäki, www.keltamaki.com, will be at the arena, selling orienteering and roller ski equipment. Only cash payment.

FOOD AND DRINK

The customary servery with hamburgers and pancakes.

SHOWERS AND TOILETS

Outdoors, adjacent to the arena. A limited number of toilets will also be provided at the quarantine area and elite start.

FIRST AID

Available at the event arena.

TRAVEL AND ACCOMMODATION

See "Info 1" on www.luletrippeln.nu and Eventor.

PRINCIPAL EVENT OFFICIALS

Event organiser: Anders Bennitz, +46 70 2207870

Competition organiser: Eva Leffler, +46 70 2501883
Planner: Melker Pettersson

OF's competition controller: Frans Wickbom
OF's course controller: Kjell Sandström
OF's mapping controller: Kjell Mörtberg
SOFT's organiser's coach: Bo Klamfelt

Speaker: Per Forsberg

Press contact: Inger Wennberg, +46 730 970450

Wishing you a warm welcome to Luleå!

