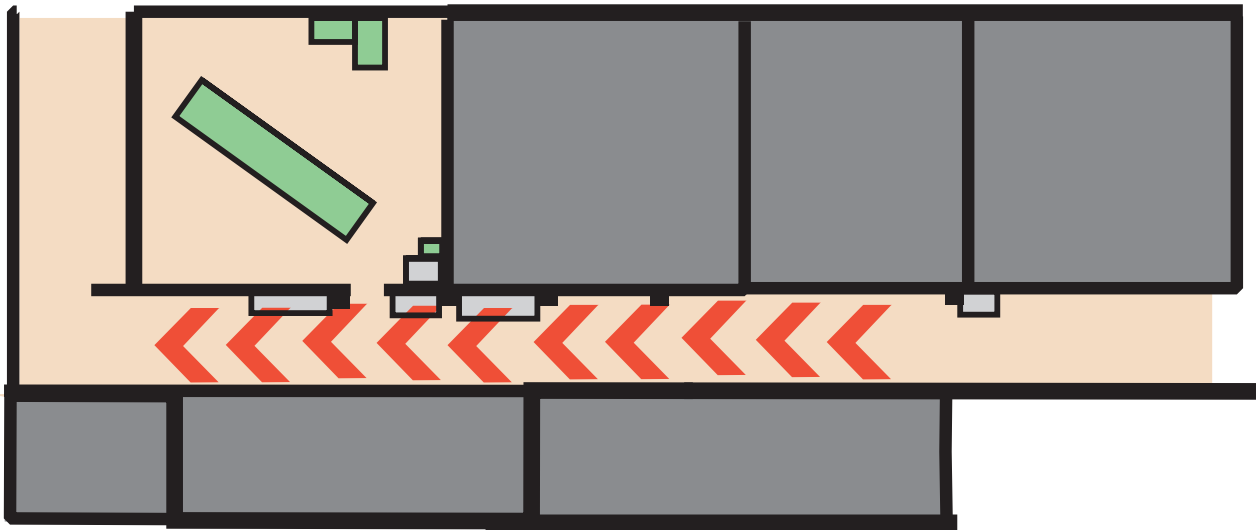
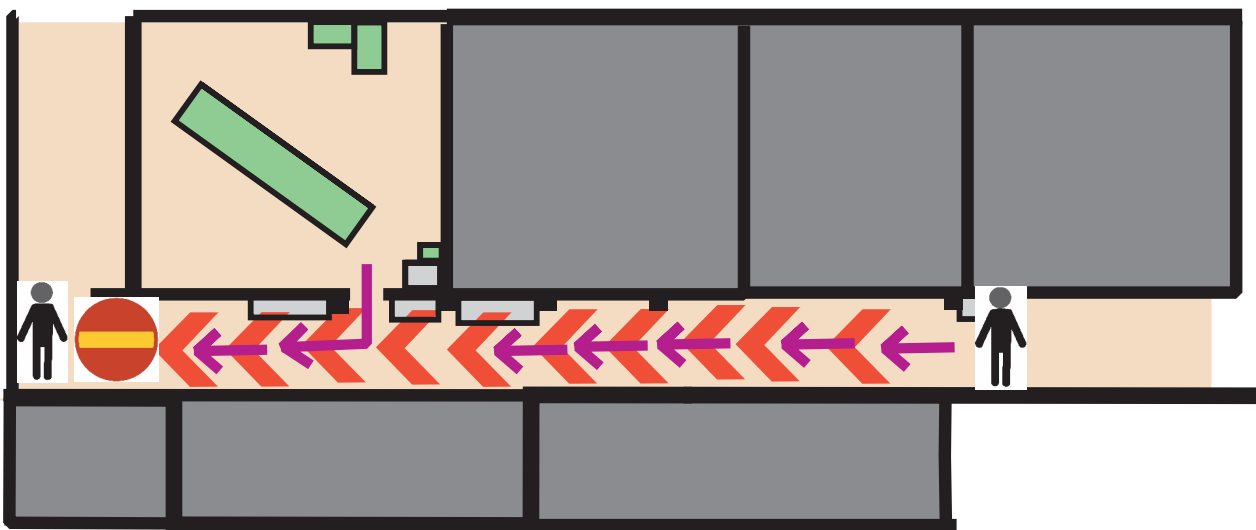


# "One-way corridor"



This is what a one-way corridor looks like on the map. You may only run in one direction when you enter this area. You may not turn back if you already have entered the area, one step in and you have to continue all the way.



In reality there will be signs that say "STOPP ENKELRIKTAT" ("stop one-way only") and road signs that means "one way only". There will also be arrows on the floor showing what direction you may run. In each end of the area there will be organizers that will keep an extra eye on you. If you run out from a room in the middle of the "one-way area" you may only run one specific direction aswell.