

# Competition- Memo

15–17 July 2022



Falkenbergs OK, Hylte OK, IK Trenne, OK Gläntan and Äträs IF welcome you to Hallands 3-dagars 2022!

- Programme** Friday July 15th – Stage 1, middle distance, first ordinary start 16.00.  
Saturday July 16th – Stage 2, long distance, first ordinary start 10.00.  
Sunday July 17th – Stage 3, long distance with pursuit, first ordinary start 10.00
- Arena** Hagbards by, guidance from road 767 in Getinge for traffic from South and road 150 in Årstad for traffic from North.
- Parking** Maximum 500 m from the arena. Parking fee 30 SEK/day or 75 SEK for all days. Parking fee is paid with cash or by Swish to 12 36 40 60 11. Please prepare the payment before entering.
- Registration on competition day** For all Open courses registration and payment will be possible at the arena between 15.00 – 17.30 (stage 1) and 09.00 – 11.00 (stage 2 and 3). The additional registration fee does not apply to Open courses.
- Youth up to 16 years: 80 SEK per stage, adults from 17 years: 150 SEK per stage. You can pay with cash or Swish. Swish number: 12 30 51 63 02



## Number bibs

All runners in DH14, DH16 and DH21L should carry number bibs for stage 1 and 2. The number bibs are found at the start for stage 1. Bring your own safety pins. The same number bibs are used for stage 1 and 2.

For all classes with pursuit on stage 3, the nine first runners will carry number bibs. Women have number bibs with red text and men have with blue text. The number bibs are found at the start. Bring your own safety-pins.

## Start

First ordinary start 16.00 (stage 1) and 10.00 (stage 2 and 3). Free starting time (punch start) will be used for all non-competitive classes between 15.30 – 18.00 (stage 1) and 09.30 – 12.00 (stage 2 and 3).

Youth classes up to HD16 are allowed to study the map up to 1 min before starting. At the pursuit at stage 3, the map will be given in the starting moment even for youth classes.



### Start

Classes: D16-D40, H16-H60

Distance to start: Stage 1 – 2100 m, Stage 2 – 2500 m, Stage 3 – 2100 m



### Start

Classes: D10-D14, D45-D90, H10-H14, H65-H90

Distance to start: Stage 1 – 1300 m, Stage 2 – 1600 m, Stage 3 – 1200 m



### Start

Open courses and Non-competitive classes (DH21 M, DH40 M etc.)

Distance to start: Stage 1 – 1300 m, Stage 2 – 1600 m, Stage 3 – 1200 m

Follow the signs to each start.

All runners must check their SportIdent to be allowed to start.

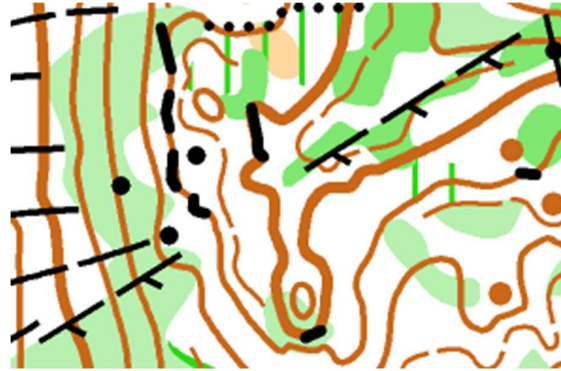
It will not be any transport of extra clothes.

<b>Starting lists and results</b>	<p>Are available on the arena and in Eventor.</p> <p>Live results at <a href="http://live.orientering.se">live.orientering.se</a></p>
<b>Map</b>	<p>DH18-21 1:10 000 stage 1, 1:15 000 stage 2 and 3.</p> <p>DH16, DH35, DH40, Difficult 7,0 1:10 000.</p> <p>Other 1:7 500 all stages.</p> <p>Equidistance 5 m all stages. Offset printed. New map drawn spring 2022 by Egidijus Kukenys.</p>
<b>Control descriptions</b>	<p>Are printed on the map and are also available for separate holders at start.</p>
<b>Punching system</b>	<p>SportIdent. Check that the SI-number are correct in the starting list. If you don't get any light or sound signal from the control-unit, continue the course, and report the problem after finish.</p> <p>Rental SI-cards can be picked up in the information and should be returned after the finish of stage 3. For non-competitive classes all rented SI-card should be returned after finalizing every stage.</p> <p>Rental fee is 30 SEK/stage. Anyone that fails to return a rental card will be charged 600 SEK.</p>
<b>Terräng-beskrivning</b>	<p>Type of terrain: Moderately hilly forest with instances of very hilly terrain. The visibility is mainly good and there is a network of roads and paths. A few marches occur in the valleys. There are some new and old felled areas and cultivated land.</p>
<b>Forbidden areas</b>	<p>Areas marked with red on the map, private gardens, and cultivated fields are not allowed to be entered.</p>
<b>Stripes in the terrain</b>	<p>Stripes in the terrain occurs on following classes for <u>stage 1 and 2</u>: Inskolning, Mycket lätt 2 km, Mycket lätt 4 km, D10 and H10</p>



## Barbed wire

There is a barbed wire fence through the competition area on stage 1. On the map it is shown as an unclear fence (see figure). In the terrain the barbed wire is marked with white stripes.



## Water

Drinking water will be available at the finish all the stages and in the terrain where the longer courses pass at stage 2 and 3. Marked on the map.

## Shadowing

Shadowing is allowed in Inskolning and open courses. The one that is shadowing are not allowed to compete in the classes HD18-HD21, youth classes or in the same course that has just been done. Shadowing is however allowed AFTER competing in one of the classes above. Shadowing maps are available in Inskolning and Mycket lätt 2 km.

## Maximum time

Maximum time is 2 h for stage 1 and 2,5 hours/stage for stage 2 and 3.

## Unfinished courses

Competitors who do not complete their course must report to the finish and register their SI-card.

## Animal report

If you see wild animals as moose, deer and wild boars, please inform the staff in the information.

## Pursuit

Pursuit on stage 3 for all classes except DH10, DH12, non-competitive classes and open courses.

Pursuit means that the total leader after the first two stages will start first in each class and the rest starts with respect to the time behind the leader. Around 3 min before the starting time the name of the runner will be announced at the start for registration. Runners that are more than 45 min behind the leader will start with 1 min gap.

See separate Pursuit-Memo for more information.

## Finish in pursuit

For classes with pursuit in stage 3, the race ends at the finish line, but the punching is made further ahead. In equal races officials will decide the order of the finishing punch.

## Price giving ceremonies

Inskolning – Price to everyone after each stage, price is collected behind the finish by showing the map.

DH10 – Price to everyone, price is collected after finish stage 3.

DH12-DH20 – Price to the first ones. Number of prices is informed on the information board. Price giving ceremony after information from the speaker.

DH21, DH21 kort, DH35 and up – Price to the winner. Price giving ceremony after information from the speaker.

DH21 Lång – Price to the three first runners. Price giving ceremony after information from the speaker.

No prices in the non-competitive classes or the open courses.

## Toilets

Toilets are available at the arena and at the camping.

There are also toilets at all starting points.

## Shower

Hot outdoor shower is offered in connection to the arena.

## Food

A well-stocked cafeteria exists on the arena serving a range of hot food food, salads, hamburgers, sausages, sandwiches, home baked cookies, candy, cold and warm drinks etc. Gluten free and lactose-free options will be available.

Opening hours from 14.00 (stage 1) and from 08.00 (stage 2 and 3). Payment can be done by cash, card or to swish number 12 34 40 22 85.

## Sport shop

SM Sport Orienteering will sell shoes, clothes and equipment for orienteering at the arena



## Kids orienteering event (Miniknat)

Available at all stages, in direct connection to the arena.

Friday: 15:30-18:30

Saturday: 9:30-12:30

Sunday: 9:30-12:30

Miniknatet is not suitable for baby strollers. Bring your own SportIdent.

Registration fee is 20 SEK/stage. Payment is done cash or to Swish number: 12 30 51 63 02.



<b>Childcare</b>	Is available at the arena for a fee of 40 SEK/stage or 100 SEK for all stages. Payment is done cash or to swish number 12 30 51 63 02.  Opening hours for childcare: Friday 15:00 - 19:30 Saturday 9:00- 13:30 Sunday 9:00 - 13:30
<b>Camping</b>	The camp site is close to the arena, see separate Camping-Memo.
<b>First aid</b>	A health care team is available at the arena together with a defibrillator.
<b>Betalning</b>	Foreign competitors and competitors without a orienteering team membership who have not paid in advance will have to pay their registration and camping fee at the information desk <u>before</u> the start at stage 1.  You can pay with card, cash and Swish at the arena.
<b>Other</b>	It is forbidden to swim in the pond on the arena.
<b>Information</b>	At <a href="http://www.hallands3dagars.se">www.hallands3dagars.se</a> and at Eventor more information can be found. The competition will also be possible to follow live at <a href="http://live.orienteering.se">live.orienteering.se</a> .
<b>Competition jury</b>	Berit Bengtsson, OK Lindena Mikael Lundqvist, Halmstad OK Thomas Josarp, FK Friskus-Varberg



## Main Officials

Event Director	Fredrik Böregård Sven-Erik Dahlberg Peter Badenfelt	Falkenbergs OK IK Trenne Falkenbergs OK
Camping	Gunilla Carlsson	072-993 19 79 <a href="mailto:camping@hallands3dagars.se">camping@hallands3dagars.se</a>
Press Host Event Secretary	Fredrik Böregård Johanna Henriksson Mikael Martinsson	<a href="mailto:press@hallands3dagars.se">press@hallands3dagars.se</a> <a href="mailto:kontakt@hallands3dagars.se">kontakt@hallands3dagars.se</a>
Course Planner	Claes Andersson Håkan Hansson Anders Besterman	Falkenbergs OK Falkenbergs OK IK Trenne
Event Controller Course Controller	Bengt Johansson Håkan Winnberg Bengt Marthinsson Henrik Bengtsson	FK Friskus-Varberg IK Trenne Hylte OK Falkenbergs OK
Information	Fredrik Böregård Sven-Erik Dahlberg Peter Badenfelt	073-036 29 71 070-630 19 15 070-278 61 77 <a href="mailto:kontakt@hallands3dagars.se">kontakt@hallands3dagars.se</a>
Child Care	Birgitta Axelsson	070-271 37 97

# Welcome!

